

BRAND NEW INDUSTRIAL FACILITY

Build to Suit | 24' Clear Height | Energy Efficient

NOW LEASING!



STATE OF THE ART
CONSTRUCTION

38585 JET CENTER PLACE
WILLOUGHBY, OH 44094



WESTON

- 130,000 SF / 10 Acres
- Docks & Drive-In Doors to Suit
- Ample Parking
- ESFR Sprinkler System
- Tax Abatement
- LED Lighting
- Quick Access to Route 2, I-271, I-90, Mentor and Downtown Cleveland

JOIN OTHER BUSINESSES IN THE AREA

**LINCOLN
ELECTRIC**

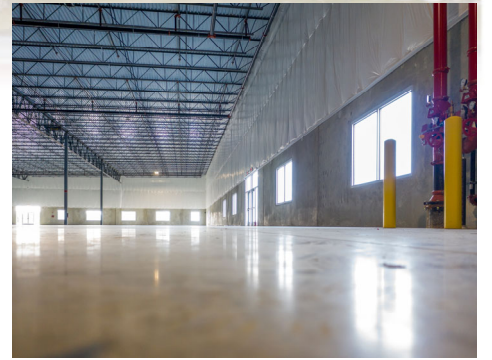
PROGRESSIVE

 **STERIS**[®]

Lubrizol

 **AVERY
DENNISON**

 **Parker**



CONTACT US

Weston has been providing homes for businesses since 1972, and has the ability to exceed our customers' expectations. While the lease is important to us, what matters the most is the relationship that we share with our tenants. We consult with you on your real estate requirements and work with you on lowering your occupancy costs. For more information and to tour this building or others, please call!

*For more information
please contact:*

Jeff Kennedy
jkennedy@teamweston.com

440-914-8420



*For more information
please contact:*

Mark Truesdell
mtruesdell@teamweston.com

440-914-8407



WESTON

*Our Core Purpose:
Providing homes for businesses
and people by finding solutions
that create value.*

WESTON INC. - 4760 Richmond Road - Suite200 - Cleveland, OH 44128 - 440.349.9000

Weston owns and manages a real estate portfolio of more than 16m SF in 8 states across the country. Established in 1972, our company today has offices in Cleveland, OH and Louisville, KY. We maintain strong relationships with over 700 tenants nationwide.