

5675 Hudson Industrial
Parkway - Suite 3
Hudson, OH 44236

For Lease

W

WESTON

Upscale Flex Space



Highlights

- 5,942 SF
- 12' - 15' Clear Height
- 1 Drive-In
- 30' x 30' Column Spacing
- Professionally Landscaped
- Great Curb Appeal

Competitive
Rates!



Professionally Owned & Managed by Weston



Jeff Kennedy
jkennedy@teamweston.com
Office: 440-914-8420
Cell: 216-313-5936



Mark Truesdell
mtruesdell@teamweston.com
Office: 440-914-8407
Cell: 513-236-1659

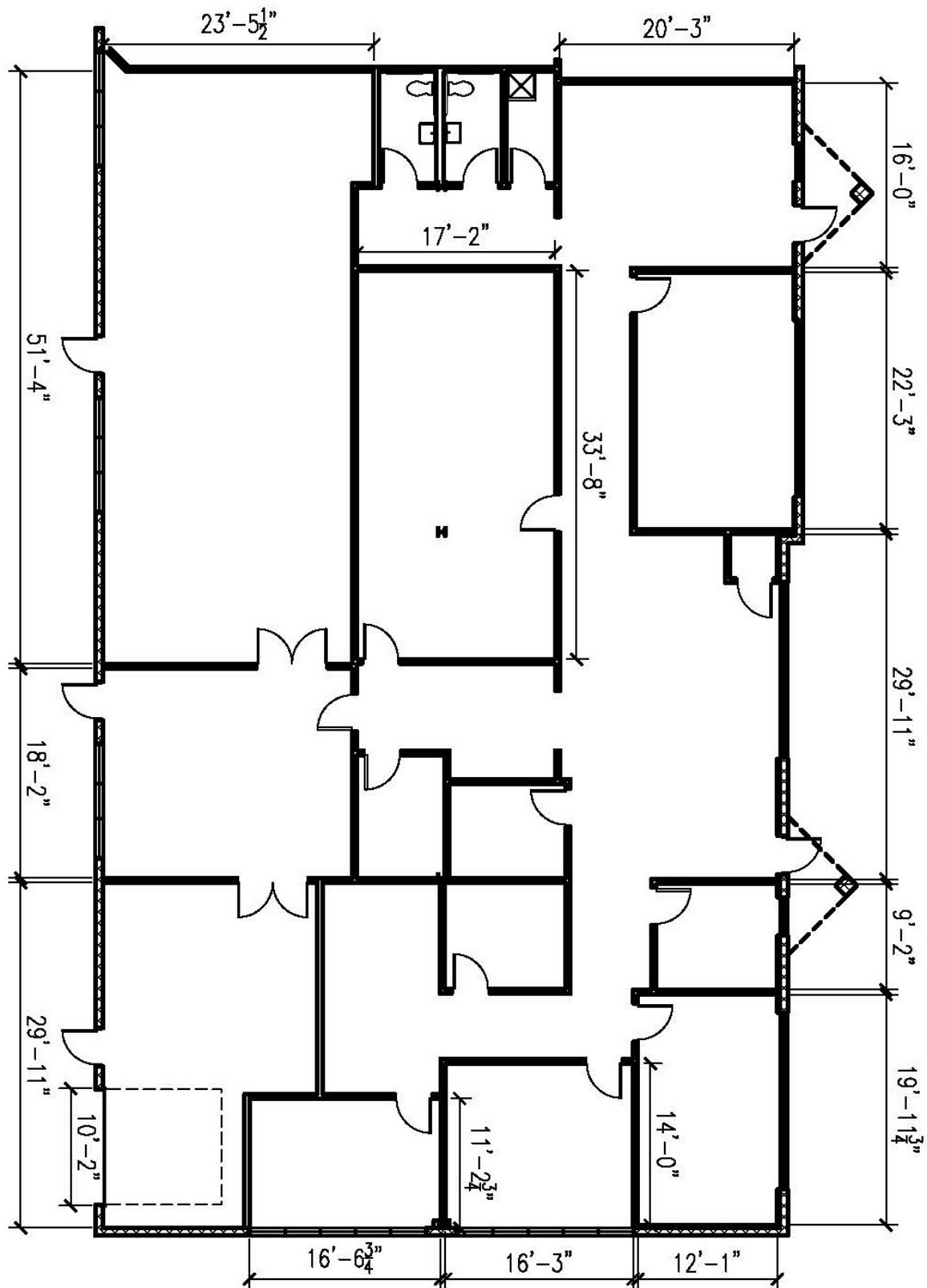


Jack Green
jgreen@teamweston.com
Office: 440-914-8429
Cell: 330-421-9203

Floor Plan



WESTON



WESTON INC. | 4760 Richmond Road | Suite 200 | Cleveland, OH 44128 | 440.349.9000
www.teamweston.com

Weston owns and manages a real estate portfolio of more than 21m SF in 8 states across the country. Established in 1972, our company today has offices in Cleveland, Ohio and Louisville, KY. We maintain strong relationships with over 750 tenants nationwide.