

5685 Hudson Industrial
Parkway - Suites 2 & 3
Hudson, OH 44236

For Lease

W

WESTON

Upscale Flex Space



Highlights

- 2 Suites Available
- 3,600 SF Total / 1,800 SF Each Suite
- Office and Warehouse
- 16' Clear Height
- 1 Drive-In
- 30' x 30' Column Spacing
- Professionally Landscaped



Professionally Owned & Managed by Weston

For more information, please contact:



Jeff Kennedy
jkennedy@teamweston.com
440.914.8420



Mark Truesdell
mtruesdell@teamweston.com
440.914.8407

Map & Floor Plan



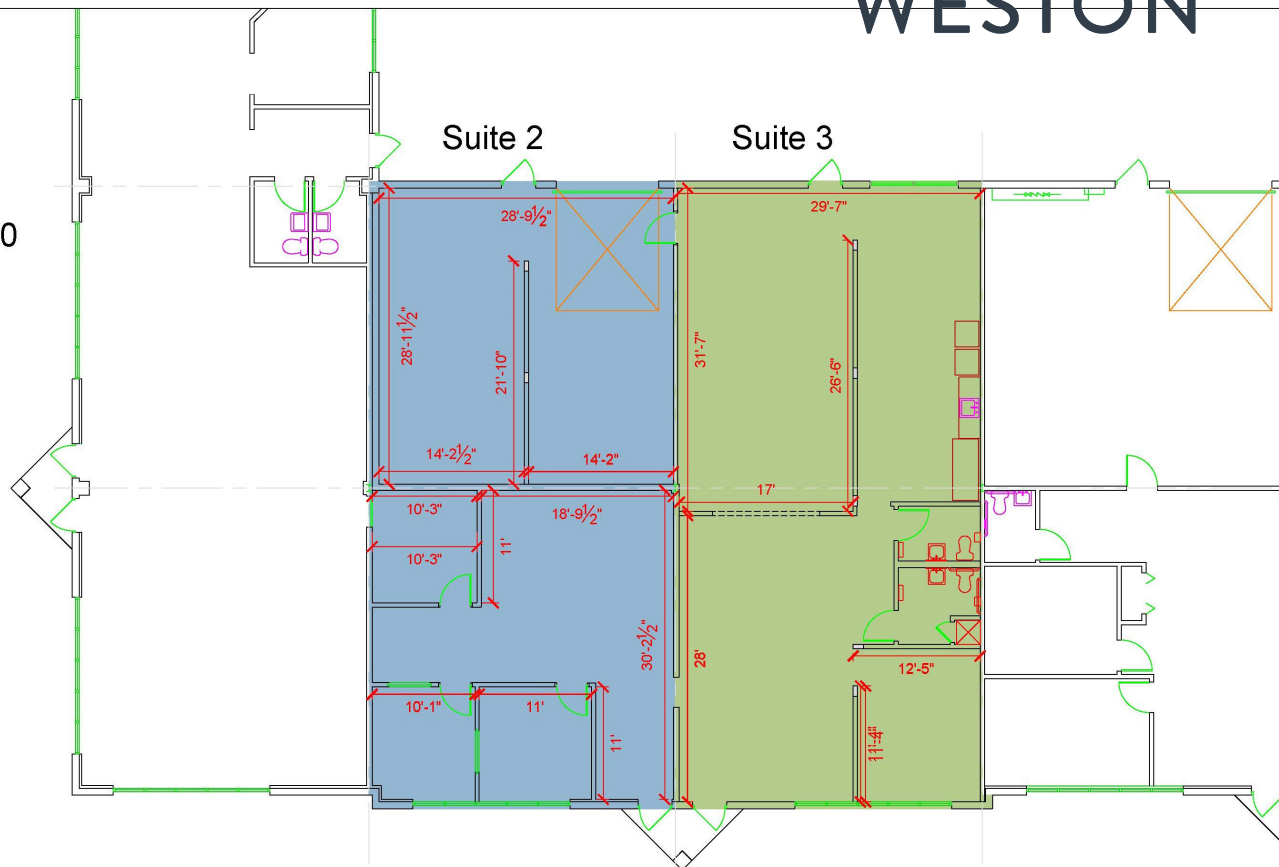
WESTON

Available Space:
3,600 SF

Warehouse SF: 900

Office SF: 2,700

Drive-Ins: 1



WESTON INC. | 4760 Richmond Road | Suite 200 | Cleveland, OH 44128 | 440.349.9000

Weston owns and manages a real estate portfolio of more than 16m SF in 8 states across the country. Established in 1972, our company today has offices in Cleveland, Ohio and Louisville, KY. We maintain strong relationships with over 700 tenants nationwide.